



CERTSWARRIOR

# Salesforce

## Catalyst-Specialist

### Salesforce Certified Catalyst Specialist

**Questions&AnswersPDF**

**ForMoreInformation:**

**<https://www.certswarrior.com/>**

## Features:

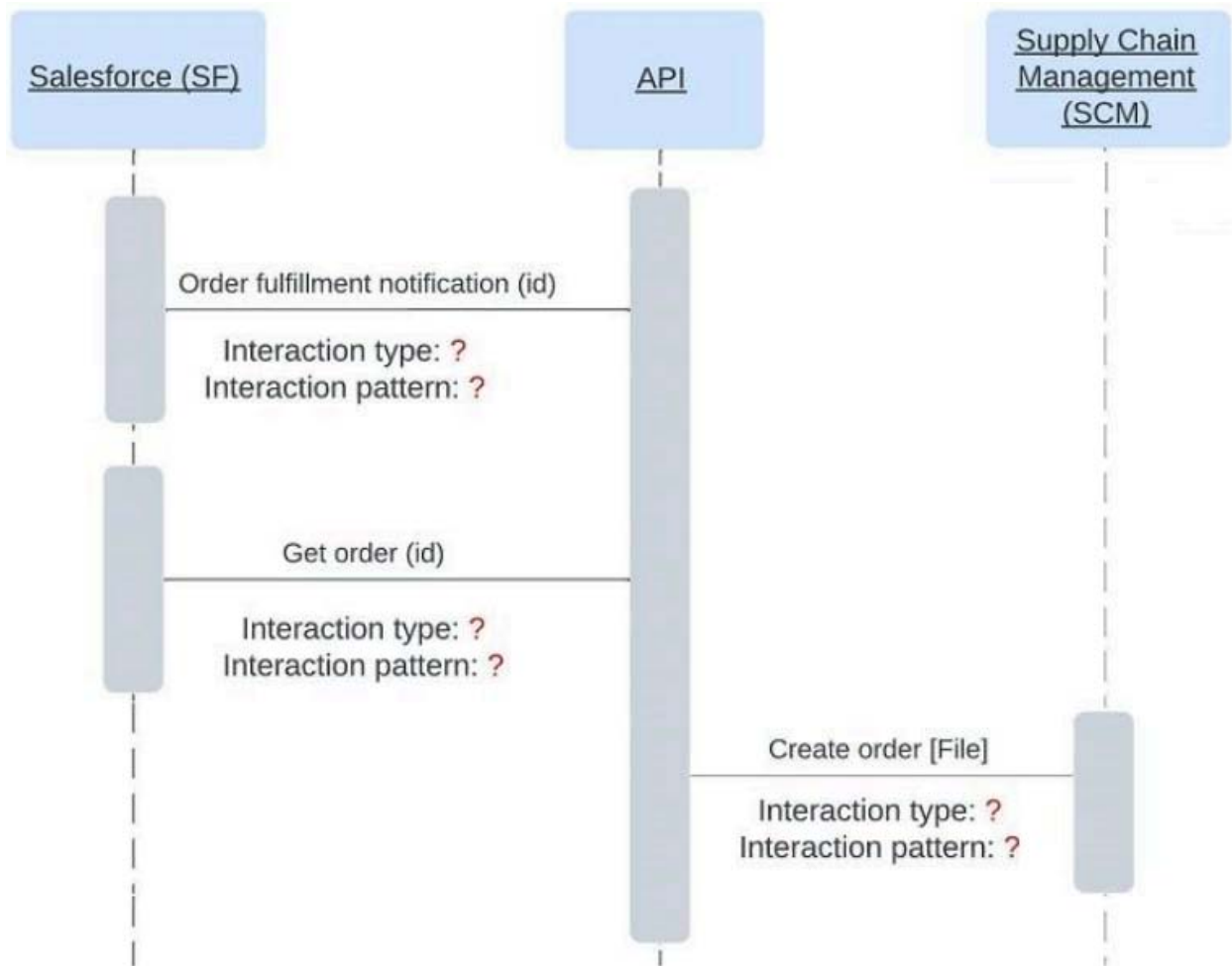
- 90DaysFreeUpdates
- 30DaysMoneyBackGuarantee
- InstantDownloadOncePurchased
- 24/7OnlineChat Support
- ItsLatestVersion

**Visit us at: <https://www.certswarrior.com/exam/catalyst-specialist>**

# Latest Version: 6.1

## Question: 1

Refer to the exhibit. As part of an order fulfillment process flow, Salesforce triggers an order fulfillment notification for every new order. Upon receipt of the notification, the details of the order will be fetched from Salesforce using a unique order identifier, and a corresponding entry will be created in the Supply Chain Management (SCM) system. The coordination of this entire process is performed by an API. What are the logical interaction types and interaction patterns involved in this end-to-end process flow?



Response:

- A. Order Fulfillment Notification: Interaction Type: Event, Interaction Pattern: One-way
- Get Order: Interaction Type: Query, Interaction Pattern: Request-Reply
- Create Order: Interaction Type: Command, Interaction Pattern: One-way
- B. Order Fulfillment Notification: Interaction Type: Command, Interaction Pattern: One-way
- Get Order: Interaction Type: Query, Interaction Pattern: Multicast
- Create Order: Interaction Type: Event, Interaction Pattern: Stream

C. Order Fulfillment Notification: Interaction Type: Event, Interaction Pattern: Multicast  
Get Order: Interaction Type: Query, Interaction Pattern: Request-Reply  
Create Order: Interaction Type: Command, Interaction Pattern: One-way  
D. Order Fulfillment Notification: Interaction Type: Event, Interaction Pattern: Stream  
Get Order: Interaction Type: Command, Interaction Pattern: One-way  
Create Order: Interaction Type: Query, Interaction Pattern: Multicast

**Answer: A**

## Question: 2

Why is it important to align engagement scope with stakeholder expectations?  
Response:

- A. It reduces the scope to the most basic elements
- B. Ensures the project remains relevant and focused
- C. To avoid any changes in project direction
- D. It guarantees project completion within a day

**Answer: B**

## Question: 3

What is the structure of the Catalyst Knowledge Hub primarily designed to support?  
Response:

- A. Random access to unrelated content
- B. Sequential learning paths
- C. Hierarchical organization of related content
- D. Single-use, disposable resources

**Answer: C**

## Question: 4

How can a communications plan help promote a Center for Enablement (C4E)?  
Response:

- A. By providing timely updates on when exceptions in deployed applications occurred and what resolutions were taken
- B. By providing visibility of activities such as training opportunities
- C. By creating a new platform to distribute information through webinars and newsletters

D. By eliminating recurring meetings with key stakeholders and broader teams

**Answer: B**

### Question: 5

Architecting for reuse is an overlapping concern with which two other Catalyst principles?

(Choose two.)

Response:

- A. Use a minimalist architecture development process
- B. Balance short-term and long-term view
- C. Decentralization
- D. Products in addition to projects
- E. Outcome-based

**Answer: B,D**

### Question: 6

Which organizational models are suitable for a C4E?

Response:

- A. Hierarchical only
- B. Network-based
- C. Distributed teams
- D. All of the above

**Answer: D**

### Question: 7

What are effective ways to discover and define business outcomes?

(Choose Two)

Response:

- A. Conducting thorough market research
- B. Ignoring industry trends
- C. Engaging with key stakeholders
- D. Relying solely on historical data

**Answer: A,C**

### Question: 8

What disadvantage can arise from too narrow an engagement scope in architectural projects?  
Response:

- A. Overly broad focus leading to confusion
- B. Missed opportunities for innovation and improvement
- C. Excessive resource allocation to unimportant areas
- D. Too much flexibility in project execution

**Answer: B**

### Question: 9

How can you reframe the value of a Catalyst approach effectively when there is resistance?  
Response:

- A. By reducing the frequency of meetings to discuss progress
- B. Through presenting case studies and evidence of success
- C. By increasing project budgets arbitrarily
- D. Ignoring feedback and continuing with the planned approach

**Answer: B**

### Question: 10

How should you reframe the value of the Catalyst approach when the team diverges from it?  
(Choose Two)  
Response:

- A. Criticize the team for deviating from the plan
- B. Highlight the risks of not following the approach
- C. Re-emphasize the long-term benefits and alignment with goals
- D. Ignore the divergence and continue as planned

**Answer: B,C**



# CERTSWARRIOR

## *FULL PRODUCT INCLUDES:*

Money Back Guarantee



Instant Download after Purchase



90 Days Free Updates



PDF Format Digital Download



24/7 Live Chat Support



Latest Syllabus Updates



**For More Information – Visit link below:**

**<https://www.certswarrior.com>**

**16 USD Discount Coupon Code: U89DY2AQ**