



CERTSWARRIOR

# Exin TMPF TMap Next Foundation

Questions&AnswersPDF

ForMoreInformation:

<https://www.certswarrior.com/>

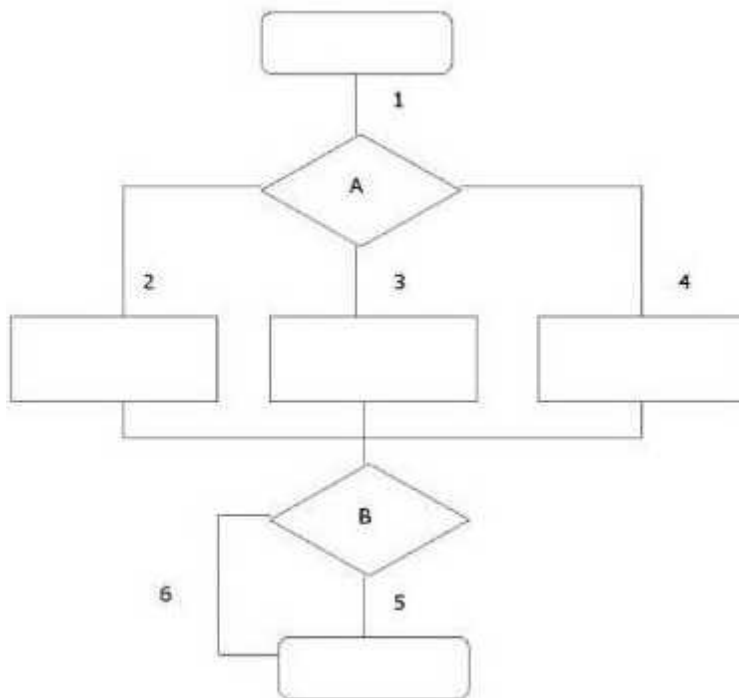
## Features:

- 90DaysFreeUpdates
- 30DaysMoneyBackGuarantee
- InstantDownloadOncePurchased
- 24/7OnlineChat Support
- ItsLatestVersion

## Latest Version: 6

### Question: 1

See the illustration below:



Which test situations can be differentiated when the coverage type paths test depth level 2 is used?

- A. 1-2; 2-3; 3-4; 2-4; 2-5; 2-6; 3-5; 3-6; 4-5; 4-6; 5-6
- B. 1-2; 1-3; 1-4; 2-5; 3-5; 4-5; 2-6; 3-6; 4-6
- C. 1-2-5; 1-2-6; 1-3-6; 1-3-5; 1-4-6; 1-4-5

**Answer: B**

### Question: 2

Which TMap phase may be located on the critical path?

- A. Planning and Control
- B. Specification
- C. Execution
- D. Preparation

**Answer: C**

### Question: 3

Which activity takes place in the Preparation phase?

- A. the test object intake
- B. allocating test units and test techniques
- C. determining the test basis
- D. collection of the test basis

**Answer: D**

### Question: 4

Which type of tool is used in the Execution phase to test a module or component that has a relationship with programs that have not yet been realized?

- A. code coverage tool
- B. comparator
- C. 'model-based testing' tool
- D. stubs and drivers

**Answer: D**

### Question: 5

See the specification below:

How many logical test cases can be generated if a semantic test using the coverage type decision points modified condition/decision coverage is used?

- A. 1
- B. 2
- C. 3
- D. 4

**Answer: C**



# CERTSWARRIOR

## *FULL PRODUCT INCLUDES:*

Money Back Guarantee



Instant Download after Purchase



90 Days Free Updates



PDF Format Digital Download



24/7 Live Chat Support



Latest Syllabus Updates



**For More Information – Visit link below:**

**<https://www.certswarrior.com>**

**16 USD Discount Coupon Code: U89DY2AQ**